



# 41<sup>st</sup> EDTNA/ERCA INTERNATIONAL CONFERENCE

GLOBAL ADVANCES IN RENAL CARE:  
ECONOMIC AND QUALITY IMPACT ON DISEASE MANAGEMENT

15 - 18 SEPTEMBER 2012  
CONVENTION CENTRE STRASBOURG, FRANCE



EUROPEAN PARLIAMENT, STRASBOURG



## PRELIMINARY PROGRAMME & CALL FOR ABSTRACTS

[WWW.EDTNAERCA.ORG](http://WWW.EDTNAERCA.ORG)





## CONTENT

KEY DATES TO REMEMBER . . . . .	1
IMPORTANT ADDRESSES . . . . .	1
WELCOME MESSAGE . . . . .	2
COMMITTEES . . . . .	3
PROGRAMME AT A GLANCE . . . . .	4
GENERAL INFORMATION . . . . .	5
SCIENTIFIC PROGRAMME . . . . .	6
ABSTRACT SUBMISSION & CALL FOR ABSTRACTS . . . . .	8
REGISTRATION . . . . .	9
ACCOMMODATION . . . . .	12
EXHIBITION & SPONSORSHIP . . . . .	13
ABOUT EDTNA/ERCA . . . . .	14
KEY AND LINK MEMBERS . . . . .	15
CORPORATE MEMBERSHIP . . . . .	16
BECOME A PART OF THE EDTNA/ERCA COMMUNITY! . . . . .	17
HOW TO JOIN . . . . .	18
CONFERENCE MEMBERSHIP . . . . .	18
A – Z INFORMATION ON ALSACE (region of France) . . . . .	19
MAP WITH HOTELS LOCATION . . . . .	21

## KEY DATES TO REMEMBER

29 February 2012	Abstract submission deadline
30 April 2012	Notification of abstract acceptance
1 July 2012	Early bird registration deadline
12 July 2012	Accommodation deadline (recommended)
15 August 2012	Regular registration deadline
15 September 2012	Conference in progress

## IMPORTANT ADDRESSES

EDTNA/ERCA, Pilatusstrasse 35, CH 6003 Lucerne, Switzerland

**EDTNA/ERCA Secretariat**  
CZECH-IN s. r. o.  
5. května 65  
Prague 4  
Czech Republic  
Tel., fax: +420 261 174 318  
Email: [queries@edtnerca.org](mailto:queries@edtnerca.org)

**EDTNA/ERCA**  
Conference Department  
CZECH-IN s. r. o.  
5. května 65  
Prague 4  
Czech Republic  
Tel.: +420 261 174 305  
Fax: +420 261 174 307  
Email: [conference2012@edtnerca.org](mailto:conference2012@edtnerca.org)

**VENUE**  
Strasbourg Convention  
and Conference Centre  
Conference Centre  
Place de Bordeaux – Wacken  
67082 Strasbourg, France  
[www.strasbourg-events.com](http://www.strasbourg-events.com)



## WELCOME MESSAGE FROM THE EXECUTIVE COMMITTEE

Dear Colleagues and Friends,

It is a great pleasure to invite you to attend the 41<sup>st</sup> EDTNA/ERCA International Conference taking place in Strasbourg, France 15<sup>th</sup> – 18<sup>th</sup> September 2012.

You will have the unique opportunity to meet colleagues from all around the world, exchange knowledge and share common vision for the future of renal care.

This year's Conference theme reflects one of the Association's main objectives:

**“Global Advances in Renal Care: Economic and Quality Impact of Disease Management”**

The 41<sup>st</sup> EDTNA/ERCA International Conference will emphasize the value of continuing education, the progress achieved for the best multidisciplinary clinical practice, health improvement, quality and economic impact both in renal care workers and disease management.

In addition to the multidisciplinary focused scientific programme, you will have a great opportunity to visit an exciting renal exhibition covering the most up to date technology and research in renal care. This exhibition is supported by our industry partners whom we deeply thank.

Strasbourg is a cosmopolitan European city with beautiful canals and an historical city centre. The European Parliament is situated within walking distance of the Conference Centre. Come and see!

We look forward welcoming you to the beautiful city of Strasbourg!

Best wishes

EDTNA/ERCA Executive Committee



## COMMITTEES

### Executive Committee

Anastasia Laskari	Immediate Past President	Greece	alaskari@otenet.gr
Alessandra Zampieron	Treasurer	Italy	alessandra.zampieron@unipd.it
Maria Saraiva	Secretary	Portugal	mariasaraiva5993@gmail.com
Edita Noruisiene	Member	Lithuania	nor.edita@gmail.com

### Supervisory Board

Jitka Pancirova	Executive Director	Czech Republic	pancirova@volny.cz
Elisheva Milo	Secretariat Co-ordinator	Israel	miloeli7@zahav.net.il
Maria Cruz Casal Garcia	Publication Co-ordinator	Spain	mcruzcasal@iber telecom.com

### Co-opted EC Member

Iris Romach		Israel	irromach@bezeqint.net
-------------	--	--------	-----------------------

### Conference Scientific Programme Committee

Paula Ormandy	Chair	UK	pormandy@btinternet.com
Helen Noble	Member	UK	helen.noble@qub.ac.uk
Anastasia Laskari	EC Link	Greece	alaskari@otenet.gr
Jitka Pancirova	Industry Link	Czech Republic	pancirova@volny.cz
Ilaria De Barbieri	Member	Italy	iladeba@alice.it

### Chief Abstract Assessors

For Chief Abstract Assesors please visit Conference website [www.edtna-erca-conference2012.com](http://www.edtna-erca-conference2012.com)

## PROGRAMME AT A GLANCE

	Saturday 15 September 2012	Sunday 16 September 2012	Monday 17 September 2012	Tuesday 18 September 2012			
08:30					08:30		
09:00		Parallel Sessions: Symposia, CES*, Workshops	Parallel Sessions: Symposia, CES*, Workshops	08:30 – 10:00 <b>Plenary Session</b>	09:00		
09:30						09:30	
10:00	10:00 – 20:00 Registration open			10:00 – 10:15 <b>Break</b>	10:00		
10:30				10:15 – 11:45 <b>Plenary Session</b>	10:30		
11:00						11:00	
11:30			Parallel Sessions: Symposia, CES*, Workshops	Parallel Sessions: Symposia, CES*, Workshops		11:30	
12:00					11:45 – 12:15 <b>Coffee Break</b>	12:00	
12:30			Lunch break		12:15 – 13:15 <b>Closing Ceremony</b>	12:30	
13:00							
13:30							
14:00		13:30 – 15:00 <b>Plenary Session</b>	Parallel Sessions: Symposia, CES*, Workshops	Parallel Sessions: Symposia, CES*, Workshops		14:00	
14:30						14:30	
15:00	<b>Coffee Break</b>				15:00		
15:30	15:15 – 16:45 <b>Plenary Session</b>	<b>Coffee Break</b>			15:30		
16:00		Parallel Sessions: Symposia, CES*, Workshops	Parallel Sessions: Symposia, CES*, Workshops		16:00		
16:30					16:30		
17:00	17:00 – 18:00 <b>Opening Ceremony</b>				17:00		
17:30					17:30		
18:00	18:00 – 21:00 <b>Welcome Cocktail &amp; Exhibition Opening</b>	17:45 – 19:15 <b>AGM</b> Annual General Meeting			18:00		
18:30					18:30		
19:00					19:00		
19:30					19:30		
20:00					20:00		
20:30					20:30		
21:00				* Corporate Education Session	21:00		

### Disclaimer

The organisers reserve the right to alter the programme if and as is deemed necessary. The EDTNA/ERCA and/or its agents have the right for any reason beyond their control to alter or to cancel, without prior notice, the Conference or any of the arrangements, time tables, plans or other items relating directly or indirectly to the 41<sup>st</sup> EDTNA/ERCA International Conference. The EDTNA/ERCA and/or its agents shall not be liable for any loss, damage, expenditure or inconvenience caused as a result of such alteration or cancellation.



## GENERAL INFORMATION (IN ALPHABETICAL ORDER)

### Abstracts

Deadline for abstract submission is **29 February 2012**.

Abstracts can be submitted only via the on-line system. For detailed instructions *please refer to page 8*. All abstract submissions must be made in English. Abstracts will be published in the Abstract Book (with ISBN number) which will be distributed on site to all registered Conference participants and published electronically on the EDTNA/ERCA website.

### Accreditation of learning hours

EDTNA/ERCA will recognise and certify the number of session hours attended by delegates. The Association is committed to continuing professional development (CPD) and this process enables those participants who need to demonstrate that they are keeping up-to-date with current practice to gain recognition for their Conference attendance. Details of the sessions which are eligible for CME accreditation points will be advertised on the Conference website.

**One credit will be assigned for every 60 minutes spent within the session hall. You are however allowed to change between the sessions and the time is accumulated.**

A certificate of attendance will be provided together with a CME certificate on **the last day of the Conference**.

### Badges

Each participant will receive a name badge on registration. Badges must be worn at all times to enable session attendance to be tracked for education accreditation. On your badge is barcode which is scanned on entering and leaving each session hall. CME credits will be assigned according to information received from the barcode system. This information is also used for safety reasons to record participants actually in the building in case of emergency. Therefore it is important you present your badge with barcode at each session hall.

### Coffee Breaks and Lunches

Coffee/tea will be served during the morning and afternoon breaks and these refreshments are included in the registration fee.

Please note that according to the Scientific Programme schedule **lunch boxes** will be distributed on Sunday (16. 9) and Monday (17. 9).

### Dates

The 41<sup>st</sup> EDTNA/ERCA International Conference will be held from **Saturday, 15 September** to **Tuesday, 18 September 2012**.

### Insurance

The Conference organiser cannot accept liability for personal injuries sustained or for loss or damage of property belonging to Conference participants (or their accompanying persons), either during or as a result of the Conference. Please check validity of your own insurance.

### Letter of Invitation

The organisers will be pleased to send a letter of invitation to any individual requesting one, once their registration form and fee have been received. It is to be understood that such an invitation is intended to help potential participants to raise travel funds or obtain a visa. It is not a commitment on the part of the Conference to provide any financial support. You may request such a letter from the Conference Department.

### Official language

The Conference is being organized by an International Education and Scientific Association. All oral presentations and posters should be in English. Plenary sessions and sessions held in the main hall will however be translated from English into French, German, Greek, Spanish. All hostesses and Conference staff will speak English and other languages.

### Programme

Please note that the programme outlined in this announcement is preliminary and may be subject to change. The programme will be modified according to the quality of received abstracts in the parallel session.

### Useful links

EDTNA/ERCA [www.edtnaerca.org](http://www.edtnaerca.org)  
EDTNA/ERCA Conference Department [www.czech-in.cz](http://www.czech-in.cz)  
Strasbourg Convention Bureau [www.mystrasbourg.com](http://www.mystrasbourg.com)

### Venue

The Convention and Conference Centre Strasbourg  
Place de Bordeaux – Wacken  
Strasbourg, France  
[www.strasbourg-events.com](http://www.strasbourg-events.com)

## SCIENTIFIC PROGRAMME

The EDTNA/ERCA promotes and enhances the quality of renal care across Europe through education, research and the implementation of quality standards. It is recognised internationally for its significant and valuable contribution to renal patient care. Each year at the annual EDTNA/ERCA International Conference, expert professionals, service leaders, academics, researchers and industry partners come together to share innovations, evidence and knowledge.

The theme of the 2012 Conference in Strasbourg, France, is 'Global Advances in Renal Care: Economic and Quality Impact of Disease Management'. The scientific programme will bring together expert guest speakers and delegates and includes abstract led parallel sessions, corporate education sessions, educational/clinical skill workshops, and renal master classes.

To celebrate this theme the Conference calls for high quality abstracts to complement key topics of interest including:

- Innovations within renal replacement therapy - major progress and controversies in therapy development
- Conservative care – the growth in numbers of patients deciding not to embark on dialysis and development of supportive and palliative care strategies
- Chronic kidney disease – impact, treatment and prevention
- Economic implications for care – cost effective interventions
- Transplantation – clinical advancements and innovations
- Measuring and monitoring quality improvement – innovative service re-design, expanding roles, sustaining effective staff and patient education programmes and practice changes
- Evidence based practice – how best identified and utilised. Core standards and guidelines and impact on practice
- Health improvement initiatives – biomedical, psychosocial, self-management, technical, dietetics, pharmaceutical
- Current trends and established strategies in the management of the full range of services required by renal patients and carers.

Abstract guidelines have been developed to enhance the quality of the abstract submission and ensure sufficient information is presented to allow a fair peer review assessment. However, if you are considering presenting your work and would like help to write an abstract, please contact your country Key Member who will be happy to offer further advice.

We look forward to welcoming you to the Conference in Strasbourg, France 15 – 18 September 2012.

**Dr Paula Ormandy**

Scientific Programme Committee Chair



## Scientific Parallel Sessions

At symposia sessions, invited Guest Speakers will discuss the latest developments in renal care. The best quality abstracts will be selected for inclusion in these parallel sessions.

## Education/Clinical skills Workshops

Workshops are open to all participants from any discipline who wish to discuss matters relating to their specific field of interest or learn more about another aspect of renal care. Advanced Skills workshop sessions provide the opportunity for delegates to extend their knowledge and skills through interactive discussion with experts to identify solutions for real practice problems.

## Master Classes

Master Class sessions are focused educational sessions presented by expert Guest Speakers. These provide delegates with the opportunity to debate a topic in detail with a recognised expert in the field. A number of Master Class sessions will be organised to complement the main scientific programme.

## Short Oral Presentations

Abstracts selected for short oral presentations will be presented within a dedicated session. These will include brief presentations of papers using 3 – 5 slides to generate an overview of the work/research or topic focused to stimulate audience discussion and questions.

## Corporate Education Sessions

These sessions are organised and sponsored by industry partners and provide opportunity for participants to access world-wide expertise to improve their own knowledge of particular focused subjects. Further details will be available in 3<sup>rd</sup> Announcement and on the Conference website.

## Annual General Meeting (AGM)

**Sunday, 16 September, 2012, 17:45**

The Annual General Meeting is the one opportunity when all members of EDTNA/ERCA can meet and exchange information with the elected volunteer leadership. Part of the AGM programme will offer information about the previous and forthcoming activities of the Association where you will have chance to take an active part in the life of your Association.

## Satellite Symposium

Finally, corporate symposia may be organised by the industry partners outside the core scientific programme of the Conference (during lunch time, before or after the end of Conference scientific programme.)

## Manuscript & Poster Scholarship for 2012

Authors of ALL accepted abstracts (oral and poster presentation) are encouraged to submit a full paper to be considered for the Manuscript Scholarship Award. Papers submitted must conform to the guidelines that will be sent to each successful author.

There will be a **First prize of 500,- €** awarded for the best Manuscript.

Poster presentation will be assessed by a panel of judges during the Conference. The best three Posters demonstrating significant quality and topic interest will be identified.

First prize for the **Best Poster Scholarship will be a 1 year E-Membership (for all authors)** to the Association and the two runners up awarded a **Certificate of Merit**.

The scholarships will be awarded during the Closing Ceremony.

## ABSTRACT SUBMISSION & CALL FOR ABSTRACTS

Abstracts for the 41<sup>st</sup> EDTNA/ERCA International Conference can be submitted within the following categories:

- Haemodialysis (acute and chronic)
- Vascular access
- Peritoneal dialysis
- Transplantation
- CKD prevention and delay
- Paediatric care
- Education of staff/patients
- Service management, quality and audit
- Psychosocial care
- Technical
- Conservative Management/Palliative Care
- Acute Kidney Injury
- Open forum

Abstracts **MUST** be submitted electronically according to the instructions provided on the Conference website: [www.edtnaerca.org](http://www.edtnaerca.org) by **29 February 2012**.

- **All abstracts must be written in English.**
- Please note that if your abstract is accepted for an oral presentation, you must also be able to give your presentation in English.
- Abstracts received after the deadline will not be accepted or considered for the programme or publication.
- All authors attending the Conference whose abstract is accepted must have the financial resources to pay all personal expenses incurred (Conference registration, production of their presentation, travel and accommodation).
- Abstracts must be submitted within an abstract category group, which the author must select at the time of submission (please refer to list below). However, the Scientific Programme Committee reserves the right to assign or change the topic category upon abstract selection.
- Abstracts will be subject to double-blind peer review by dedicated abstract category marking teams. Based on the accumulative quality/content scores Abstracts will be selected by the Scientific Programme Committee for oral, poster or poster with short oral presentation.
- A preference for poster presentation can be indicated although the Scientific Programme Committee will make the final decision as to how the abstract will be presented. Acceptance or rejection of an abstract is based on the average mark awarded by the peer review marking team.
- Posters are particularly suitable for the presentation of complex data or material requiring extensive illustration.
- It should be noted that poster presentations carry the same status as oral presentations and will be subject to the same selection process (by means of written abstracts in English) by the Scientific Programme Committee.
- Accepted abstracts will be published in Abstract Book.
- An abstract needs to be clear in particular we want to know why you explored the subject, the approach you used, and that the method was appropriate and results reliable. However, we are also interested in how you have implemented your findings into clinical practice and the consequences of this change. Please emphasize this in your abstract, and when presenting make the focus of your talk/ poster the application to practice rather than the objectives and methods used in the study.
- The intent of EDTNA/ERCA is to present original work during the Conference. Previously presented or published abstracts cannot therefore be accepted

**If you have difficulties in submitting your abstracts or if you need any further information please contact the Conference Department:**

**Abstracts2012@edtnaerca.org  
or call + 420 261 174 305**

**FOR INSTRUCTIONS ON HOW TO SUBMIT  
YOUR ABSTRACT, PLEASE VISIT THE WEB SITE**

[www.edtnaerca.org](http://www.edtnaerca.org)



## REGISTRATION

All participants must be registered and it is advised to register in advance. People who are not registered will not have an access to the session halls and exhibition area.

### Online registration – preferred

All participants are kindly recommended to register preferably via the Online Registration Form. Other registration possibilities are also available below. Please read the instructions on the Conference website carefully.

### Other registration possibilities

If you do not have access to the Internet, please send the attached Registration Form to the Conference Department in Prague by **1 July 2012**.

A PDF version of the Registration or Accommodation Form can be downloaded from the Conference website and used to register by fax or airmail only. Each participant submitting the Registration Form by fax or airmail will receive a Participant Registration Number (PRN) by e-mail to include with the details of payment.

**Please do not send any payments (bank transfers) without the details of the PRN included as it is impossible to identify payments without this specific Registration number.**

Participants and accompanying persons are kindly requested to register in advance by completing and submitting

the Registration Form with the appropriate fees. If your payment is not received before deadline dates **1 July, 15 August 2012** the late fee will be automatically charged.

### After 1 July 2012

You may not apply for members registration fees if you are not a current member. To verify your membership status at any time please contact the EDTNA/ERCA Membership Manager Tomáš Nejedlý.

(email: [queries@edtnerca.org](mailto:queries@edtnerca.org) or [tomas.nejedly@czech-in.cz](mailto:tomas.nejedly@czech-in.cz))

Please note: To apply for the EDTNA/ERCA member's registration fees, you must have a valid paid membership status prior to **1<sup>st</sup> July 2012** (see page 17)

### After 15 August 2012

You are kindly requested to make all payments by credit card exclusively. Payment by bank transfer is not an available option after the 15 August 2012.

### After 5 September 2012

Pre-registrations will NOT be accepted any longer by the Conference Department BUT you will have the possibility to register onsite.

Registration Fees		Net of VAT	French VAT 19,6 %	Total EUR
<b>EARLY</b> Up to 1 July 2012	Member	360,37	70,63	<b>431</b>
	Non-member	560,20	109,80	<b>670</b>
	Student	170,57	33,43	<b>204</b>
	Accompanying person	100,33	19,67	<b>120</b>
<b>REGULAR</b> 2 July – 15 August 2012	Member	420,57	82,43	<b>503</b>
	Non-member	570,23	111,77	<b>682</b>
	Student	170,57	33,43	<b>204</b>
	Accompanying person	100,33	19,67	<b>120</b>
<b>LATE/ON-SITE</b> After 15 August 2012	Member	460,70	90,30	<b>551</b>
	Non-member	580,27	113,73	<b>694</b>
	Student	170,57	33,43	<b>204</b>
	Accompanying person	100,33	19,67	<b>120</b>

VAT 19,6 % is applicable for all Conference registration fees and will be charged in general on top of the net registration fee. Registration Fees paid by all Companies having a French VAT number are matter of Reverse Charge regulation, Conference Department must receive the French VAT number for the preparation of the invoice, the amount ex or net of French VAT is to be paid, wrongly paid French VAT 19,6 % will be refunded.

### Registration fee includes:

- Admission to Scientific sessions, exhibition and poster area
- Conference bag, Final Programme, Abstract Book
- Coffee breaks, 2 x lunch box (16 and 17 September 2012)
- Admission to Opening Ceremony and Welcome Cocktail

### Accompanying person fee includes:

- Access to exhibition Opening Ceremony
- Welcome Cocktail
- City tour 17 September 2012 at 10:00.
- All Accompanying Persons are asked to re-confirm attendance on this tour by mail to Conference Department [conference2012@edtnerca.org](mailto:conference2012@edtnerca.org) and then they will receive a voucher for this tour with their Conference badge
- Please note that accompanying persons are not allowed to attend the scientific sessions or access to the exhibition hall

Please note that accompanying persons have special registration rates this year. Think positively about bringing someone with you to Strasbourg. Not only will you experience an excellent educational event attended by multidisciplinary renal healthcare experts; you will be able to enjoy the magnificent city of Strasbourg with your companion. Be sure to register early, to get the cheapest rates, and join us at the splendid Congress Centre near to the European Parliament.

### Group Registration

If you have a group with five or more participants please send your request to email: [registration2012@edtnerca.org](mailto:registration2012@edtnerca.org)

### Confirmation

Upon receipt of the correct registration fee (clear of bank charges), each participant will receive a confirmation of registration. It is obligatory to bring this confirmation to the registration desk at the ground floor, by Erasme entrance as proof of your registration otherwise we cannot identify your pre-registration if any problem occurs. Confirmation will be sent upon receipt of payment

### Payment

All fees for the Conference registration should be **paid in EUR (€), free of all bank charges!**

- **by bank transfer** (clear of any bank charges) clearly stating the participant's name and PRN (Participant's Registration Number)

Bank transfer can be made only upon issued advance invoice, payments received without pre-registration details (name, PRN, invoice) cannot be identified.

<b>Beneficiary:</b>	EDTNA/ERCA
<b>Beneficiary address:</b>	Pilatusstrasse 35, CH 6003 Lucerne, Switzerland
<b>Bank address:</b>	UBS AG, Bahnhofplatz 2, CH 6003 Lucerne, Switzerland
<b>Account number:</b>	0248-429279.60J
<b>IBAN:</b>	CH700024824842927960J
<b>SWIFT/BIC:</b>	UBSWCHZH80A
<b>Jurisdiction:</b>	Switzerland

- **by credit card** (Visa, Eurocard/Mastercard)

### Please note:

If your payment is not received before deadline dates 1 July, 15 August 2012 the late fee will automatically apply for all unpaid registrations or new requests.

### Groups' registration

- Allowance of 10% from the group total volume for name changes and cancellations for free by 1 July 2012.
- 5% of name changes are allowed onsite.
- A cancellation of complete group: same fees apply as for Individual registrants.

The place of jurisdiction is at the legal venue of the Association, Lucerne, Switzerland.

### Cancellation/Refund Policy

Please note, that cancellation received:

#### Up to 1 July 2012

will be refunded less € 50,- for administrative fees

#### Between 1 July 2012 and 15 August 2012

50% of registration fee paid

#### After 15 August 2012

no refund can be processed

- All cancellations must be notified in writing (by mail, fax or email) to the Conference Department according to the following conditions.
- Refunds will be processed AFTER the Conference.
- Requests for refunds made after 31 October 2012 will not be considered.
- Registrants may transfer their registration to a colleague at any time. For any change of name a fee of € 50 will be charged.
- All registrations received at the Conference Department, CZECH-IN, by 31 August 2012 will be included in the list of participants.



## ACCOMMODATION

Hotel	*	Location	RATE SGL (€)	RATE DBL (€)
Sofitel	4	city centre	179,5	204
Hilton	4	next to venue	170,5	196
Europe	3	city centre	151	167
Résidence J.S. Bach	4	city centre	141,5	153
Le Grand Hotel	3	city centre	140	141
Mercure Centre	3	city centre	138	156
Mercure Gare Centrale	3	city centre	137,5	155
Novotel Centre Halles	3	city centre	136,5	153
Maison Rouge	3	city centre	130	131
Adagio Strasbourg Place Kleber	3	city centre	*120,5	*132
Mercure Quartier St Jean	3	city centre/ near train station	110,5	112
Ibis Strasbourg Centre Ponts Couverts	2	city centre old part	** 78/103	** 88/113
ETC hotel	2	city centre	81,1	98,2

Rates are quoted in EUR per room/per night including breakfast, VAT and city tax. Governmental tax may vary and rates may change accordingly.

\* Adagio: rate includes 1 cleaning per stay; additional cleaning at EUR 10 to be requested upon arrival.

\*\* Ibis hotel: please note different rate on weekend 14, 15, 16 Sept and on weekday 17 Sept.

CZECH-IN is appointed as an official housing agent for this Conference.

Hotel rooms at special Conference rates are held in Strasbourg: mostly in the city centre, about 10 minutes by tram from the venue (Strasbourg Convention Centre). For details, rates and map please kindly see the List of hotels.

### Accommodation deadline

Rooms will be allocated on a first come, first served basis.

Reservations are recommended by **12 July 2012**. After this deadline requests will be accepted, however choice may be limited and availability of rooms cannot be guaranteed. CZECH-IN holds the right to book your 2nd choice hotel if your preferred one is fully booked.

### Reservation

To make a reservation please use our *Online Booking system* or *Accommodation Booking Form* to be faxed to +420 261 174 307/ or mailed to [accommodation2012@edtnerca.org](mailto:accommodation2012@edtnerca.org). Reservations per phone cannot be processed.

**Full prepayment is required** to guarantee your booking.

Hotel will require a credit card upon arrival to guarantee the extras/incidental charges or possible extension of stay.

### Cancellation/change of reservation

Cancellations/changes must be notified in writing (email or fax) to CZECH-IN. Cancellations/changes made by phone cannot be accepted.

Please do not contact the hotels directly as reservations are held as blocks by CZECH-IN.

In case of later arrival other than reserved please inform CZECH-IN in order to guarantee the room.

Cancellation will be charged according to the following **cancellation conditions**:

- For hotel reservations cancelled **until 12 July 2012** full deposit will be refunded less EUR 20,-.
- After **12 July 2012** cancellation fee equalling 1 night stay will be charged (1 night is non-refundable, rest of nights prepaid will be refunded).
- After **12 August 2012** all nights as reserved will be charged and no refund will be made.
- In case of no-show or later arrival or earlier departure other than reserved all nights as reserved will be charged.
- Reimbursement if applicable will be processed after the Conference.



## Payment conditions

**Full prepayment** is required to confirm your reservation and it can be made by a credit card, bank transfer or check payable to the account of CZECH-IN.

Bank transfer and check will be accepted until **12 August 2012** only. Please forward a copy of the transfer stating the participant's name in order to identify your payment. **Full payment free of any bank charges must be received by CZECH-IN.**

All extras or additional nights must be settled directly with the hotel upon departure.

### CZECH-IN banking details (for the bank transfer):

**Beneficiary/Account name:** CZECH-IN, s. r. o.  
**Name of the Bank:** KOMERČNÍ BANKA a. s.  
**Bank Address:** Na Příkopě 33,  
114 07 Prague 1, Czech Republic  
**IBAN Number:** CZ590100000510903490207  
**BIC Code:** KOMBCZPPXXX

## Check-in/check-out

Rooms will be available after 14hrs on the day of arrival and must be vacated before 12 noon on the day of departure. In the event that the guest fails to comply with the arrival/departure times, the hotel may charge the guest's credit card for any additional day or night accommodation incurred.

Early check-in or late check-out can be requested, however cannot be guaranteed; the room is subject to the room availability on the day of arrival/departure. Additional day or full rate may be charged by the hotel.

## Confirmation of reservation

After completing the online hotel booking, delegate will receive a system notification that reservation request was submitted (please note this is not a confirmation of the room). Confirmation of hotel reservation will be issued and sent by email by CZECH-IN only after the full payment is received. Hotel confirmation should be presented to the hotel reception upon check-in. Please check on your reservation with CZECH-IN anytime on [accommodation2012@edtnerca.org](mailto:accommodation2012@edtnerca.org).

## Group hotel reservations

For group reservations (5 rooms and more) please kindly contact CZECH-IN with a separate request at [accommodation2012@edtnerca.org](mailto:accommodation2012@edtnerca.org) or call +420 261 174 305.

Different payment and cancellation conditions will apply.

## Responsibility

Please see Registration part, *page 11*, same applies for accommodation.

## EXHIBITION & SPONSORSHIP

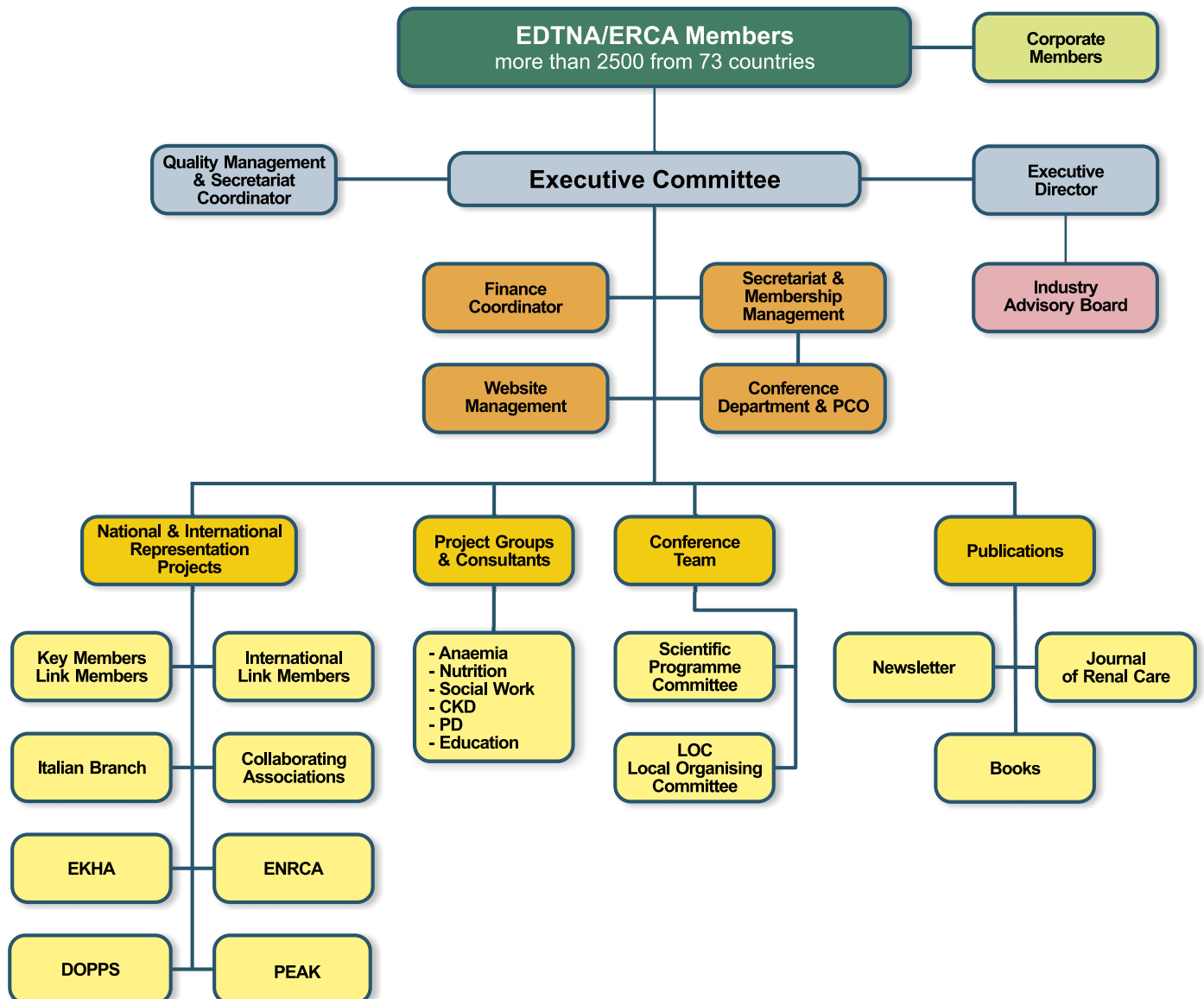
The EDTNA/ERCA gratefully acknowledges the support from all industry partners organizing Corporate Education Sessions, sponsors and exhibitors. The industrial exhibition brings together renal and pharmaceutical companies, manufacturers of materials and equipment and scientific publishers from all over the world and provides a unique opportunity to display and advertise the latest products, services and technical innovations. The exhibition will be located in 1<sup>st</sup> Floor foyer, close proximity to the scientific lecture halls. The detailed Exhibitor Services Kit can be obtained from:

EDTNA/ERCA Conference Department/Jana Dvořáková  
CZECH-IN s. r. o.  
5. května 65, 140 21 Prague 4  
Czech Republic  
Email: [exhibition2012@edtnerca.org](mailto:exhibition2012@edtnerca.org)

## ABOUT EDTNA/ERCA

The European Dialysis and Transplant Nurses Association/European Renal Care Association (EDTNA/ERCA) was established in 1971 to address the special educational needs of nurses and other healthcare professionals caring for patients who suffer from Chronic Kidney Disease. This includes all aspects of renal treatment: prevention and early detection of Chronic Kidney Disease, management of dialysis therapy, transplantation and supportive care. Since then, the Association has grown to become one of the most important forums in Europe for exchanging of information and experience for all members of the renal care team who treat and care for patients suffering from renal failure.

EDTNA/ERCA is a multi-disciplinary organization of individual members. Association membership is open to nurses, technicians, social workers, dieticians, unit managers, transplant co-ordinators, and any other professionals working with renal patients. EDTNA/ERCA has currently about 2500 members from more than 73 countries.



## KEY AND LINK MEMBERS

**English:** For any assistance, either with completing the form (in English) or clarifying other doubts related with the announcement please contact your Key Member.

**French:** Si remplir ces formulaires en anglais vous pose un problème ou si vous avez des questions concernant le contenu du programme, n'hésitez pas / contacter votre Key Member.

**German:** Wenn Sie beim Ausfüllen der Formulare Hilfe benötigen oder einige Informationen in diesem Heft nicht verstehen, wenden Sie sich bitte an Ihr Key Member.

**Italian:** Se avete bisogno di aiuto per compilare il modulo di iscrizione in Inglese, o per le informazioni contenute in questo annuncio, potete contattare il vostro Key Member.

**Spanish:** Si rellenar los formularios en inglés te supone algún problema o si tienes alguna pregunta acerca del contenido del Programa Científico, por favor contacta con tu Key Member.

**Ελληνικά:** Εάν χρειάζεστε βοήθεια είτε να συμπληρώσετε το έντυπο στα αγγλικά ή να διευκρινίσετε άλλα θέματα που αφορούν την ανακοίνωση παρακαλώ επικοινωνήστε με το Key Member της χώρας σας.

### KEY MEMBERS

Marianna Eleftheroudi  
 Martha Girak  
 Michel Roden (ad interim)  
 Jitka Pancířová (ad interim)  
 Carmen Reiher  
 Marianna Eleftheroudi  
 Viktoria Szlonkai  
 Frank Alexander Kelly  
 Lina Shwarz  
 Maria Patrizia Fiorito  
 Gabriela Magrian  
 Bozica Stupar  
 Sonja Pecolar  
 Carlota Hidalgo Lopez  
 Lyn Allen

Co-Key Member Mentor  
 Austria  
 Belgium  
 Czech Republic  
 Germany  
 Greece  
 Hungary  
 Ireland  
 Israel  
 Italy  
 Poland  
 Serbia  
 Slovenia  
 Spain  
 United Kingdom

vlaxavasg@the.forthnet.gr  
 martha.girak@meduniwien.ac.at  
 michel.roden@skynet.be  
 pancirova@volny.cz  
 ca.re@web.de  
 vlaxavasg@the.forthnet.gr  
 viktoriaszlonkai@fmc-ag.com  
 f.kelly@st-vincents.ie  
 linash@clalit.org.il  
 mariapatrizia.fiorito@gmail.com  
 motzkin@hotmail.com  
 bokizemun@eunet.rs  
 sonja.pecolar@sb-sg.si  
 chidalgo@imas.imim.es  
 lyn.allen@nhs.net

### LINK MEMBERS

Chrystalla Despoti  
 Edita Noruisiene  
 Susan Rogers  
 Berislav Poje  
 Senay Özer Özkan

 Cyprus  
 Lithuania  
 the Netherlands  
 Croatia  
 Turkey

shizzyd@cytanet.com.cy  
 nor.edita@gmail.com  
 susan.rogers@xs4all.nl  
 berislav.poje@gmail.com  
 senayozer@msn.com

### INTERNATIONAL LINK MEMBERS

Angela Henson  
 Mary Clare O'Gara  
 Emma Lapointe  
 Aporn Sittipraneet

 Australia  
 China  
 Canada  
 Thailand

angela\_henson@health.qld.gov.au  
 maryog@gmail.com  
 emma.lapointe@rrsss16.gouv.qc.ca  
 aporn.sittipraneet@fmc-asia.com

## CORPORATE MEMBERSHIP

The companies listed on this page embrace the EDTNA/ERCA's objective of improving the quality of care given to nephrology patients. Their active participation and support of Association activities throughout the year is the best evidence of our shared commitment. We are proud to acknowledge them as Corporate Members of our Association and look forward to further collaboration in the future.

	Amgen Europe Ltd., Switzerland
	Baxter Europe, Belgium
	B. Braun, Czech Republic
	Diaverum, Sweden
	Fresenius Medical Care AG, Germany
	Gambro, Sweden
	Genzyme Europe BV, Netherlands
	KfH, Kuratorium für Dialyse und Transplantation e.V, Germany
	Lauer Membran Wassertechnik GmbH, Germany
	Patienten-Heimversorgung, Germany
	Redsense Medical AB, Sweden
	Roche, Czech Republic
	Shire Pharmaceuticals, United Kingdom

Corporate Membership is open to any company sharing the interests of EDTNA/ERCA and the renal care team.

### Corporate Members:

- Receive recognition at the International Conference and through its promotional brochures (2<sup>nd</sup> Announcement and Final Programme)
- Receive 5 registrations for the International Conference with entry rights to the scientific sessions at the low “member early registration fee”
- Receive visibility on [www.edtnerca.org](http://www.edtnerca.org)
- Obtain access to all individual Member's benefits including copies of all publications, the Journal of Renal Care®, the Association's quarterly Newsletter and E-blast

For more information please visit: [www.edtnerca.org/corporate](http://www.edtnerca.org/corporate)

## BECOME A PART OF THE EDTNA/ERCA COMMUNITY!

As an EDTNA/ERCA Member you will benefit from sound professional support, professional knowledge exchange and numerous personal learning opportunities on a national and international level.

Stay informed about the latest renal care treatment developments and the Association's activities at a national and international level through the EDTNA/ERCA quarterly Newsletter, EDTNA/ERCA eBlast, Web and Annual Conference. Every year the Newsletter layout reflects the Annual Conference Theme and Location.



Receive four editions per year of the EDTNA/ERCA Journal of Renal Care® plus special Journal Supplements.

Access to project reports of European-wide interest information on Standards and Quality Management in Renal Care through the [www.edtnaerca.org](http://www.edtnaerca.org).

### Obtain copies of EDTNA/ERCA Handbooks:

- Peritoneal Dialysis, A Guide to Clinical Practice
- Haematology, A Guide to Clinical Practice
- Renal Transplantation, A Guide to Clinical Practice
- CKD Stage 1 – 3 & CKD Stage 4 – 5
- EDTNA/ERCA Recommendations for Prevention and Management of Violence and Aggression in Renal Units
- Conservative Management in Advanced Kidney Disease, A Guide to Clinical Practice
- The Diabetic Patient and Chronic Kidney Disease, A Guide to Clinical Practice
- Caring for the Elderly Renal Patient, A Guide to Clinical Practice
- Environmental Guideline for Dialysis, A Practical Guide to Reduce Environmental Burden of Dialysis
- Fármacos en Terapia Renal Sustitutiva, Guía de Práctica Clínica ...

And many more available in the [EDTNA/ERCA Publications Portfolio](#) on the Association's website!

Participate in International Conferences and meetings with special member's only conditions.

Join the [EDTNA/ERCA Volunteers' Team](#) and take part in European renal care quality advancement.

Participate in Projects such as:

- Go Green in Dialysis
- Vascular Access Cannulation & Care Guidelines
- DOPPS
- Venous Needle Dislodgement (VND)
- Survey on Attitudes of the European Renal Nurses Towards Older People (joint EDTNA/ERCA & European Network of Renal Care Associations (ENRCA))

... And many others!

### Speaking your Language:

- EDTNA/ERCA currently translates the Newsletter in 15 languages (English, Dutch, French, German, Greek, Hebrew, Italian, Lithuanian, Polish, Portuguese, Serbian, Slovenian, Spanish, Czech, Russian and Turkish)
- Benefit from local support from your national Key Member/ Link Member and/or International Link Member
- Network with peers at the national and international level through local Conferences, Seminars and Project Groups



## HOW TO JOIN

You may register online and evaluate which membership category best suits your interests at: [www.edtnerca.org](http://www.edtnerca.org).

You may also contact Tomáš Nejedlý, the EDTNA/ERCA Membership Manager at [queries@edtnerca.org](mailto:queries@edtnerca.org).

Please note that membership registration will be processed upon receipt of payment. To contact your national EDTNA/ERCA representative (Key Member/Link Member), visit the Leadership Directory on [www.edtnerca.org](http://www.edtnerca.org).

## CONFERENCE MEMBERSHIP

Conference Membership will be granted to any individual who showed interest in renal care and attended the International EDTNA/ERCA Conference and who are NOT already member according to another membership category. Conference members will have (1) year Conference Membership status and will benefit from electronic and print information services at the discretion of the Association.



### EDTNA/ERCA Secretariat

Prague Congress Centre  
5. května 65  
140 21 Prague 4  
Czech Republic

Tel.: +420 261 174 318  
Fax: +420 261 174 318  
E-mail: [queries@edtnerca.org](mailto:queries@edtnerca.org)  
[www.edtnerca.org](http://www.edtnerca.org)

## Membership categories and fees

		Member (1)	Global Member (2)	Associate Member (3)	European EEC Member (4)	
Membership for 1 Year	Fee	Membership	€ 60	€ 100	€ 60	€ 20
		Conference Membership	€ 0	€ 0	€ 0	€ 0
		E-Membership	€ 40	€ 40	€ 40	€ 10
Membership for 3 Year	Fee	Membership	€ 170	€ 255	€ 170	€ 60
		E-Membership	€ 100	€ 100	€ 100	€ 30

*Fees are subject of 0 % Swiss Value Added Tax (VAT).*

## A – Z INFORMATION ON ALSACE (REGION OF FRANCE)

### Alsace

This bicultural and bilingual region at the junction of France and Germany is an economic and scientific powerhouse as well as the optimal platform for driving pan-European business development.

Ideally located at the crossroads of France, Germany and Switzerland, Alsace is a land of cultural and commercial exchange. The region enjoys a good balance between nature and urbanization, and quality of life is an asset valued both by the local inhabitants and tourists.

The **heritage** in Alsace is particularly rich, especially for the number of old castles and fortified towns, as well as remnants of the industrial revolution. It reflects the strong identity of the region, forged over the centuries. Contemporary culture also holds an important place in Alsace as attested to by the numerous museums, amusement parks, theatres and auditoriums.

#### Gastronomy and fine wines

Then, there is the art of gastronomy that has been generously refined over the centuries. And to accompany a great meal, the 'grand cru' of Alsace is perfectly adapted to local dishes. Our finest wines are on the wine lists of the world's best restaurants.

### Culture and Heritage

More than 250 museums and collections throughout Alsace look forward to welcoming visitors keen to discover their rich heritage, ranging from prehistory through to contemporary art.

Alsace boasts Europe's highest concentration of feudal castles, bearing witness to its turbulent history. Without a doubt the most famous of these is the Haut Koenigsbourg castle which is one of France's most frequently visited monuments. Alsace has more than 400 ruined castles, including the recently restored Hohlandsbourg castle.

The region has also been heavily marked by warfare throughout the ages. The Alsace-Moselle Memorial traces the tragic history of the Alsace and the Moselle areas from 1870 through to Franco-German reconciliation and the beginning of the European construction process. The Struth of concentration camp (the only camp of its kind built on French soil) and the Maginot Line including in particular the "Four à Chaux" fortifications in Lembach bear witness to the region's tragic history.

### Currency

**EURO** – France joined 11 other EU members to launch the Euro on 1 January 1999, with Euro coins and banknotes completely replacing the French Franc in early 2002.

### Emergency – SOS 112

The number 112 can be dialled to reach emergency services – medical, fire and police – from anywhere in Europe. This Pan-European emergency number 112 can be called from any telephone (landline, pay phone or mobile cellular phone). Calls are free. It can be used for any life-threatening situation.

### Electricity

Electricity in France is 230 Volts, alternating at 50 cycles per second.

Plug type: Two round pins plugs.



### Language

French – The dialect is used throughout the whole of Alsace as well as in part of the Moselle area. It is one of the most widely spoken regional languages in France. It is also a key aspect of the region's identity, being the result of Alsace's turbulent history. Unlike several decades ago, today you won't find any Alsatian under the age of 60 unable to speak French, as the French language became compulsory at school after the liberation. Unfortunately, the transmission of the Alsatian language from one generation to another is in constant decline, particularly in urban areas.

Although originally derived from Alemannic, the Alsatian dialect is clearly distinct from German. Firstly because this is above all a spoken language. Secondly, because Alsatian has not evolved in the same manner as German, having absorbed a number of words from the French language. Although spoken in a relatively limited area, the Alsatian dialect varies from place to place.

### Nature

A small region with a huge natural diversity.

Thanks to its varied climatic influences, Alsace possesses a number of very different natural environments guaranteed to capture the imagination of anyone who enjoys rural tourism or waterborne tourism. Alsace possesses a generous and abundant natural environment, including the Rhenish jungles on the Rhinau island, the plains with their parks and gardens, the abundant forests including the Erstein Forest, or the outstanding biological diversity to be found in Alsace's Petite Camargue.

### Smoking

France is to ban smoking in all public places from February 2007.

### Strasbourg

The capital and principal city of the Alsace region in Eastern France and is the official seat of the European Parliament. Located close to the border with Germany, it is the capital of the Bas-Rhin département. The city and the region of Alsace are historically German-speaking, explaining the city's Germanic name. In 2006, the city proper had 272,975 inhabitants and its urban community 467,375 inhabitants. With 638,670 inhabitants in 2006, Strasbourg's metropolitan area (aire urbaine) (only the part of the metropolitan area on French territory) is the ninth largest in France. The transnational Eurodistrict Strasbourg-Ortenau had a population of 884,988 inhabitants in 2008.

Strasbourg is the seat of several **European institutions**, such as the Council of Europe (with its European Court of Human Rights, its European Directorate for the Quality of Medicines and its European Audiovisual Observatory) and the Eurocorps, as well as the **European Parliament** and the European Ombudsman of the European Union. The city is the seat of the Central Commission for Navigation on the Rhine.

Strasbourg's historic city centre, the **Grande Île (Grand Island)** with Petite France, was classified a World Heritage site by UNESCO in 1988, the first time such an honour was placed on an entire city centre. Strasbourg is fused into the Franco-German culture and although violently disputed throughout history, has been a bridge of unity between France and Germany for centuries, especially through the University of Strasbourg, currently the largest in France, and the coexistence of Catholic and Protestant culture.

Economically, Strasbourg is an important centre of manufacturing and engineering, as well as of road, rail, and river communications. The port of Strasbourg is the second largest on the Rhine after Duisburg, Germany. In terms of city rankings, Strasbourg has been ranked third in France and 18<sup>th</sup> globally for innovation.

## Time Zone

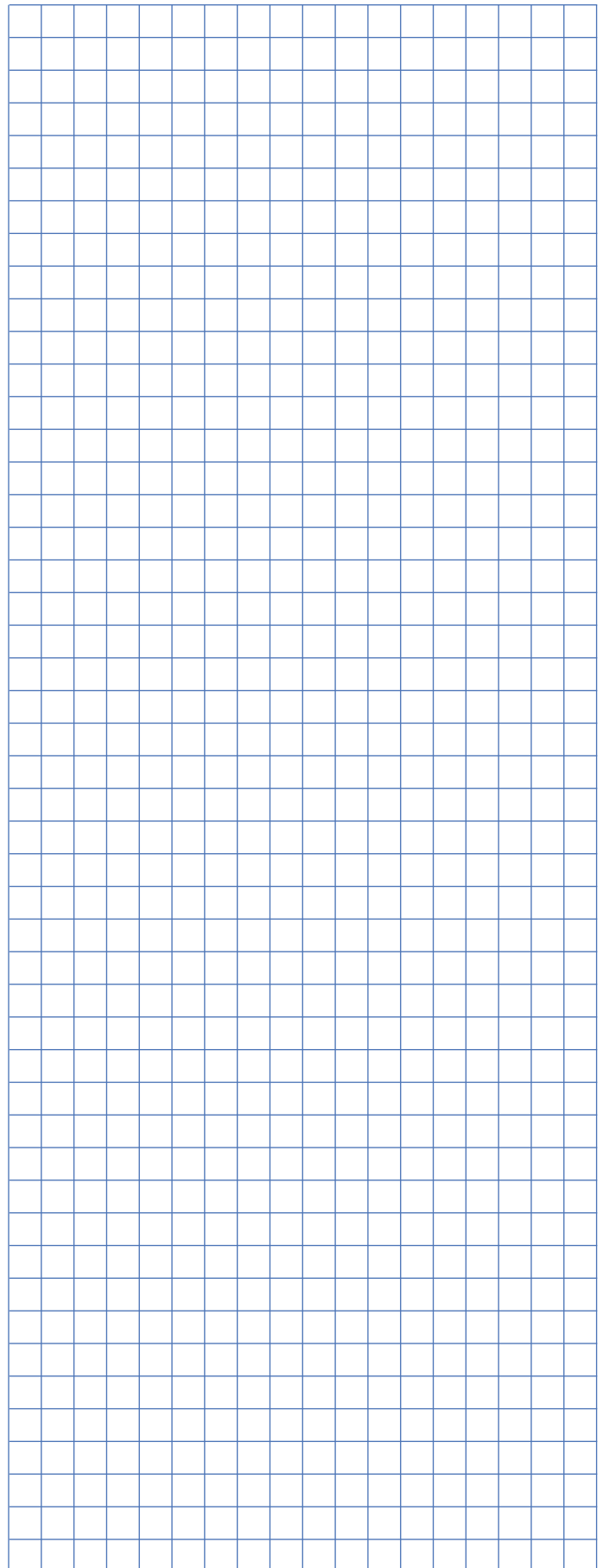
Central European Time – GMT +1.

## Useful Links

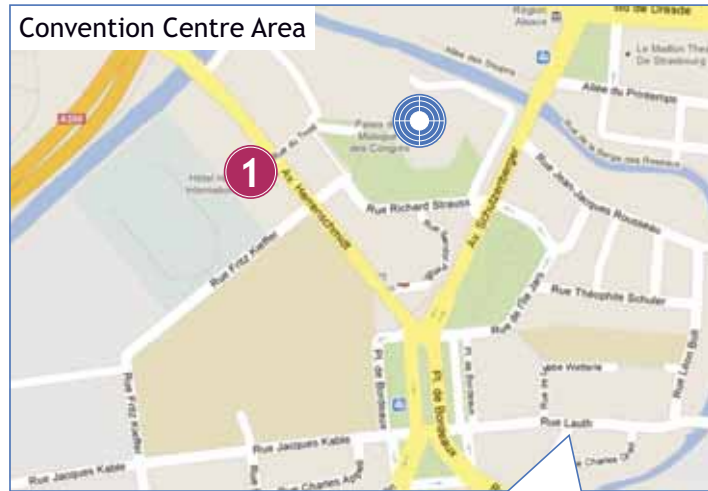
- Strasbourg Convention Bureau [www.mystrasbourg.com](http://www.mystrasbourg.com)
- Comité Régional du Tourisme d'Alsace [www.tourisme-alsace.com](http://www.tourisme-alsace.com)

## VISA

European Community passport holders do not need a visa to visit France. Many other nationalities are also exempt for stays up to 3 month, however if you have doubts we advise you to check before travelling on French embassy in your country.



# MAP WITH HOTELS LOCATION



aprox 5 minutes by tram



 Convention Centre Strasbourg

 1 Hilton Strasbourg

 2 Le Jean Sebastian Bach Hôtel


 3 Sofitel Strasbourg


 4 Hotel Adagio Strasbourg Place Kleber

 5 Europe Hotel

 6 Le Grand Hotel

 7 Hotel Maison Rouge Hotel

 8 Hotel Mercure Strasbourg Quartier Saint Jean

 9 Hotel Mercure Strasbourg Centre

 10 Hotel Mercure Strasbourg Gare Centrale

 11 Hotel Novotel Strasbourg Centre Halles

 12 ETC Hôtel Strasbourg

 13 Hotel Ibis Strasbourg Centre Ponts Couverts



# IQD & Clinical Guidelines for Dialysis

EDTNA/ERCA & Gambro are proud to present a joint project aiming to define multidisciplinary clinical guidelines for dialysis. Together we will launch the results during the EDTNA/ERCA Conference in 2013.



## Why do we need clinical guidelines for dialysis?

- Renal patients are older and suffer from various co-morbidities
- There is higher demand for individualized treatments
- Patient numbers continue to increase
- Outcomes are not improving, considering application of modern technology, treatment regimes and medicine
- Significant differences were observed in clinical practice among countries as there are not available unified clinical guidelines for multidisciplinary renal teams